

P3DCAXS-70L

12 OR 24VDC, 7 AMP ACCESS CONTROL POWER SUPPLY



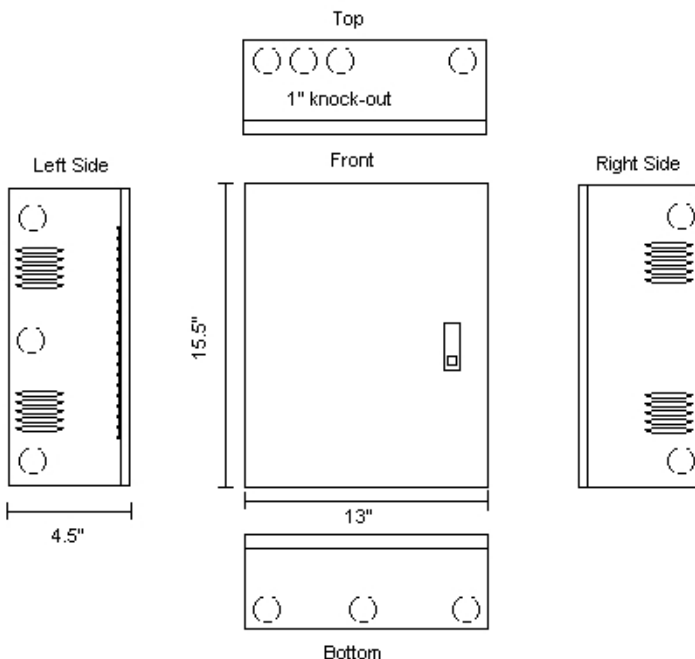
The P3DCAXS-70L is a power supply and charger. It is engineered to convert 115VAC/60Hz input into 12VDC or 24VDC @ 7 AMPS of continuous supply current. The P3DCAXS-70L is designed for use in an access control system.

FEATURES

- Front spring loaded, locking, side vented, heavy gauge metal enclosure
- Double coated polyurethane finish
- Multiple 1" knock-outs to accommodate various wiring configurations
- Filtered and electronically regulated outputs
- Built-in charger for sealed lead acid or gel type batteries
- AC Fail and low battery supervision (form "C" contacts)
- AC input and DC output LED indicate power is present
- Tim pot adjustable voltage
- Short circuit and thermal overload protection
- Includes battery leads

SPECIFICATIONS

- Input 115VAC 50/60Hz, 1.7A
- 12 or 24VDC selectable output
- Power supply/charger - P3PS-7-SU
- Transformer (P3XR28175) includes built-in thermal protection
- Maximum temperature range: 32° to 120°F (0° to 49° C)
- Ideal Operating temperature: 70° (21°C)
- For indoor use only
- Enclosure dimensions: 15.5" (H) x 13" (W) x 4.5" (D)
- Shipping weight: 19 lbs



1-877-478-4733

WWW.PTHREE.COM

**Specifications subject to change without notice*

RELATED PART NUMBERS



P3DCAXS-7OL-DB4

12 OR 24VDC, 4 OUTPUT, 7 AMP ACCESS CONTROL POWER SUPPLY

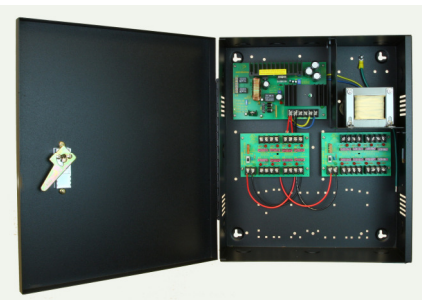
- Four (4) fuse protected outputs (P3DB-4)
- Individual output fuses rated at 3A
- Main fuse rated at 7A
- Shipping weight: 19 lbs



P3DCAXS-7OL-DB8

12 OR 24VDC, 8 OUTPUT, 7 AMP ACCESS CONTROL POWER SUPPLY

- Eight (8) fuse protected outputs (P3DB-8)
- Individual output fuses rated at 3A
- Main fuse rated at 7A
- Shipping weight: 20 lbs



P3DCAXS-7OL-DB16

12 OR 24VDC, 16 OUTPUT, 7 AMP ACCESS CONTROL POWER SUPPLY

- Sixteen (16) fuse protected outputs [(2) P3DB-8]
- Individual output fuses rated at 3A
- Main fuse rated at 7A
- Shipping weight: 21 lbs



P3DCAXS-7OL-PC5

12 OR 24VDC, 5 POWER CONTROL OUTPUTS, 7 AMP ACCESS CONTROL POWER SUPPLY

- Five (5) individual PTC protected, power limited class 2 outputs (P3PC-5)
- Fire Alarm or Access Control trigger inputs
- Individual output PTC limited to 2.5A per output @ 12 VDC or 24VDC
- Shipping weight: 21 lbs



P3DCAXS-7OL-PC8

12 OR 24VDC, 8 POWER CONTROL OUTPUTS, 7 AMP ACCESS CONTROL POWER SUPPLY

- Eight (8) individually selectable (FAIL/SAFE or FAIL/SECURE), fused protected outputs (P3PC-8)
- Eight (8) trigger input options
- FACP disconnect
- Individual fuses rated at 3A
- Main fuse rated at 7A
- Shipping weight: 22 lbs